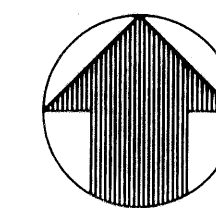


# CANTERBURY REPLAT AT P.G.A. NATIONAL

136

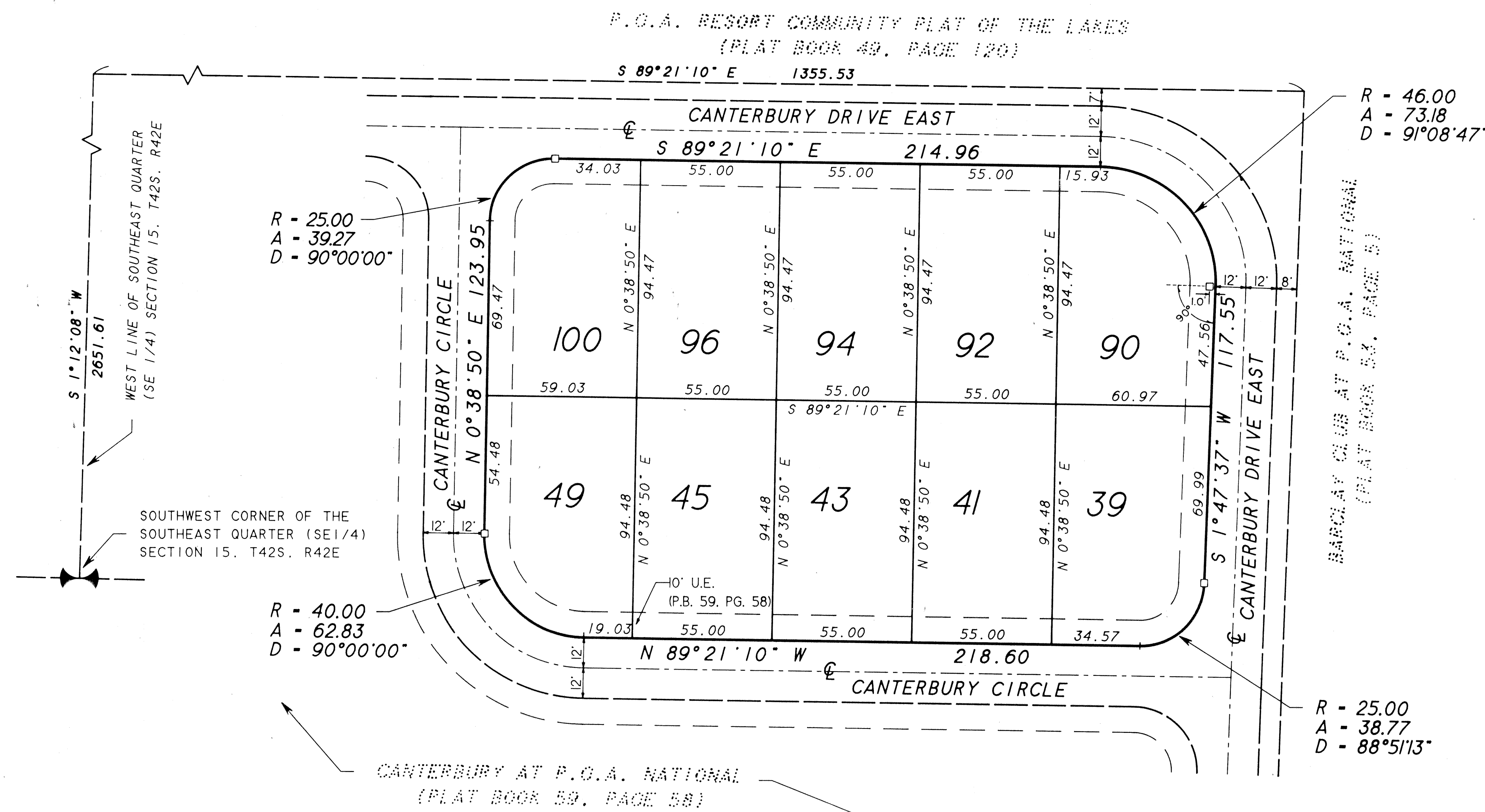
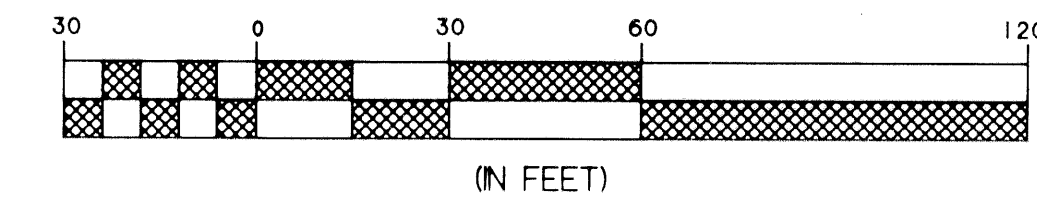
A REPLAT OF A PORTION OF CANTERBURY AT P.G.A. NATIONAL, AS RECORDED IN PLAT BOOK 59, PAGE 58, PUBLIC RECORDS OF PALM BEACH COUNTY, FLORIDA, LYING IN SECTION 15, TOWNSHIP 42 SOUTH, RANGE 42 EAST, CITY OF PALM BEACH GARDENS, PALM BEACH COUNTY, FLORIDA.

JANUARY 1995



SCALE: 1"=30'

GRAPHIC SCALE



SHEET 2 OF 2

SUBDIVISION \* Canterbury Replat @  
BOOK 74 P.G.A. National  
PAGE 136  
FLOOD MAP \*  
QUAD \*  
SE  
PUD NAME C Palm Beach Gardens

**CANTERBURY REPLAT AT  
P.G.A. NATIONAL**

**WALLACE SURVEYING**  
CORPORATION  
901 NORTHBAY PARKWAY, SUITE 117, WEST PALM BEACH, FLORIDA 33407 • (407) 840-4551

FIELD	J.P.	JOB NO.	93-1054 "F"	FB	PGA21 PG 58
OFFICE	R.C./C.L.W.	DATE	JAN, 1995	DWG NO.	93-1054-2
CHK'D.		REF.		SHEET	2 OF 2